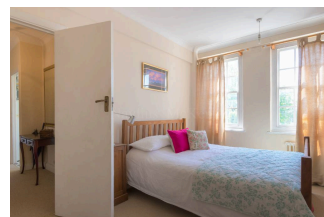
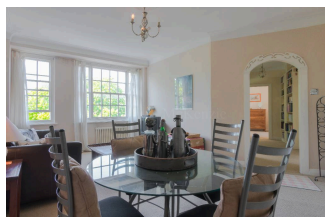


Eton College Road, NW3, Chalk Farm, NW3



Eton College Road, NW3, Chalk Farm, NW3

We are delighted to offer for sale this bright one bedroom flat, situated on the fifth floor of this popular and sought after 1930's purpose built block, the flat has one bedroom, fitted kitchen, reception room and shower room, it also has use of the communal gardens, there are two lifts, porterage, and off street car parking is available on a first come first served basis. The property is only a short walk to Chalk Farm tube station (Northern Line). Viewing recommended. Sole agent.

We are delighted to offer for sale this bright one bedroom flat, situated on the fifth floor of this popular and sought after 1930's purpose built block, the flat has one bedroom, fitted kitchen, reception room and shower room, it also has use of the communal gardens, there are two lifts, porterage, and off street car parking is available on a first come first served basis. The property is only a short walk to Chalk Farm tube station (Northern Line), and if you stroll across Bridge Approach this takes you into Primrose Hill, where there are a wide variety of boutique shops, street cafes, restaurants and the famous Primrose Hill park. The service charge also includes the heating and hot water. Viewing highly recommended. Sole agent.

£450,000

Features

- ✓ One bedroom
- ✓ Fitted kitchen
- ✓ Reception room
- ✓ Shower room
- ✓ Two lifts
- ✓ Communal Gardens
- ✓ Porterage
- ✓ Close To Chalk Farm tube station (Northern line)



1 Bedroom



1 Reception



1 Bathroom



Communal Garden

